



# Lineman's Accessories

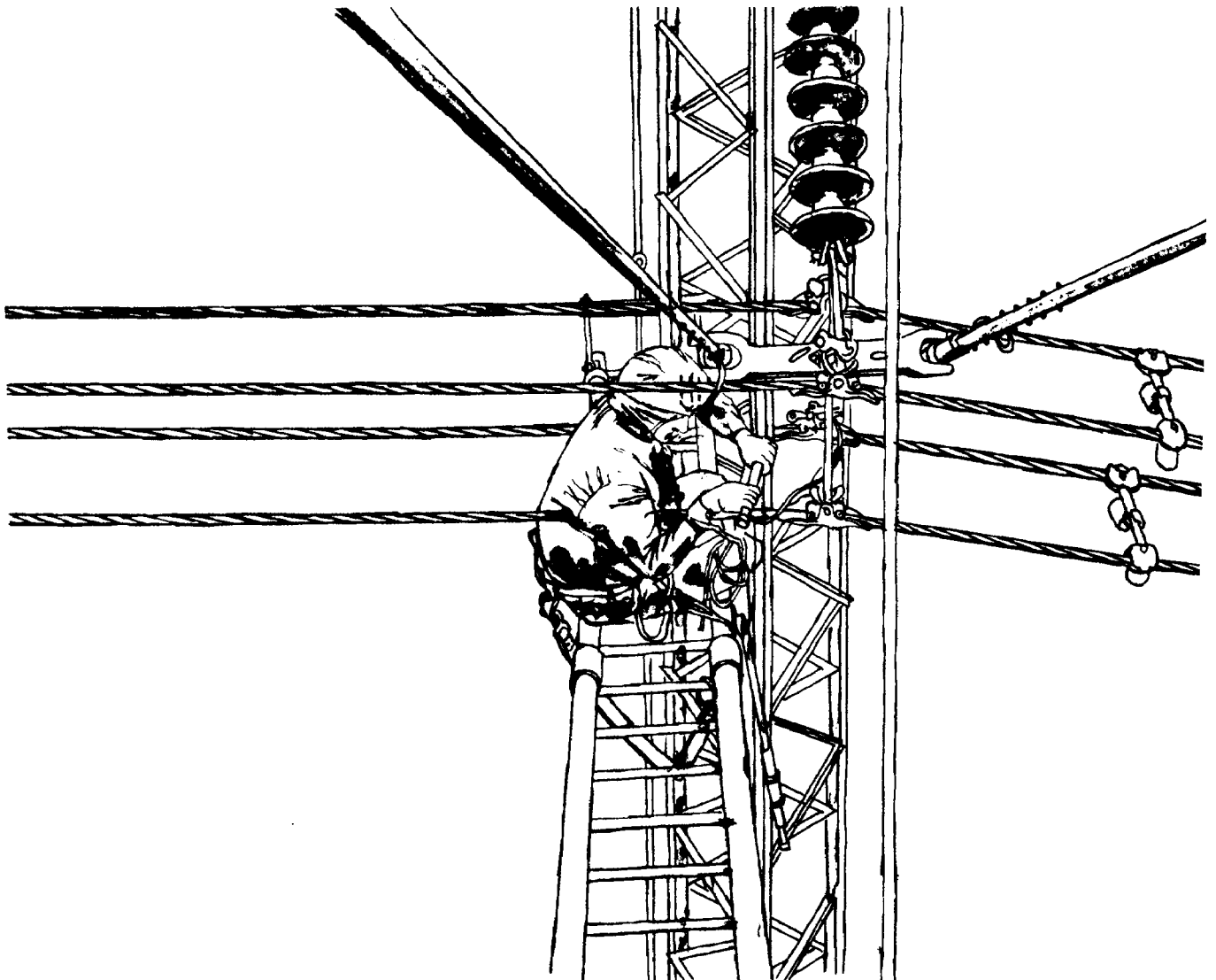
## Warranty - Material

Hubbell Power Systems, Inc. warrants all products sold by it to be merchantable (as such term is defined in the Uniform Commercial Code) and to be free from defects in material and workmanship. Buyer must notify the Company promptly of any claim under this warranty. The Buyer's exclusive remedy for breach of this warranty shall be the repair or replacement, F.O.B. factory, at the Company's option, of any product defective under the warranty which is returned to the Company within one year from the date of shipment. NO OTHER WARRANTY, WHETHER EXPRESS OR ARISING BY OPERATION OF LAW, COURSE OF DEALING, USAGE OF TRADE OR OTHERWISE IMPLIED, SHALL EXIST IN CONNECTION WITH THE COMPANY'S PRODUCTS OR ANY SALE OR USE THEREOF. The Company shall in no event be liable for any loss of profits or any consequential or special damages incurred by Buyer. The Company's warranty shall run only to the first Buyer of a product from the Company, from the Company's distributor, or from an original equipment manufacturer reselling the Company's product, and is non-assignable and non-transferable and shall be of no force and effect if asserted by any person other than such first Buyer. This warranty applies only to the use of the product as intended by Seller and does not cover any misapplication or misuse of said product.

## Warranty - Application

Hubbell Power Systems, Inc. does not warrant the accuracy of and results from product or system performance recommendations resulting from any engineering analysis or study. This applies regardless of whether a charge is made for the recommendation, or if it is provided free of charge.

Responsibility for selection of the proper product or application rests solely with the purchaser. In the event of errors or inaccuracies determined to be caused by Hubbell Power Systems, Inc., its liability will be limited to the re-performance of any such analysis or study.



**NOTICE: For latest revision of our Catalog and Literature, please visit our web site: [www.hubbellpowersystems.com](http://www.hubbellpowersystems.com)**

NOTE: Because Hubbell has a policy of continuous product improvement, we reserve the right to change design and specifications without notice.

©Copyright 2010 Hubbell Incorporated • 210 North Allen Street • Centralia, MO 65240 USA

[www.hubbellpowersystems.com](http://www.hubbellpowersystems.com)  
E-mail: [hpsliterature@hps.hubbell.com](mailto:hpsliterature@hps.hubbell.com)

# Conductive Suit EHV Barehand Conductive Suit puts the lineman on the job . . .

Born of a need to let the lineman get closer to his work, Chance EHV Barehand Conductive Clothing replaces hand tools on the end of 16-foot Epoxiglas<sup>®</sup> poles; the clothing is bonded to the conductor, placing the lineman within the field of electricity, not as a conductor himself but insulated

by Chance Epoxiglas<sup>®</sup> products (ladders, platforms, etc.), and allows him to work with his hand on the conductor hardware. Thus, transmission line maintenance efficiency and effectiveness are advanced without endangering the lineman and without interrupting customer service.



For work on voltages through 765 kV, the two-piece conductive suit is made of a blend of Nomex aramid flame resistant fiber and microscopic stainless steel fiber. A Zepel finish is applied to repel water. Analysis and tests show the material:

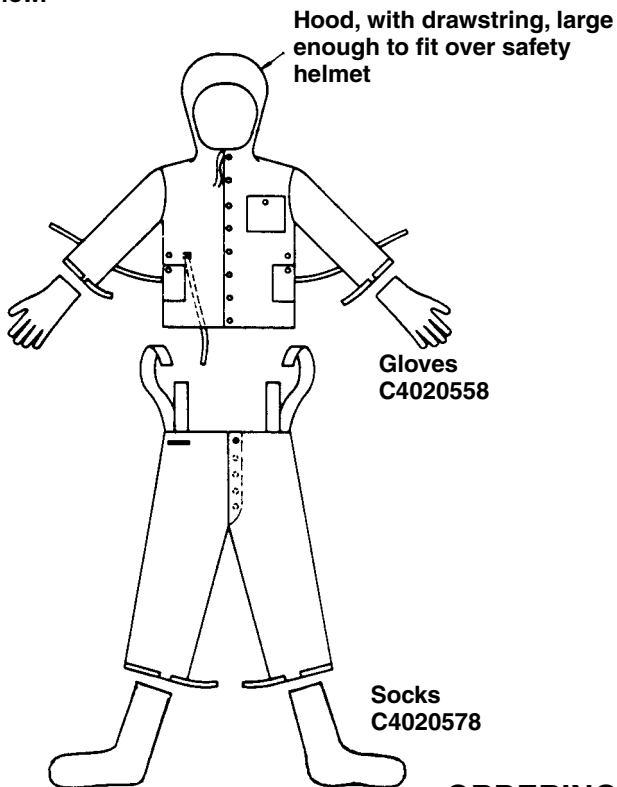
- is extremely strong and tear resistant.
- meets or exceeds IEC 895 Specification for conductive clothing.
- does not degrade with time or number of washings.

Overcast stitching is used on all major seams for integrity, durability and resistance to fraying. Tails and appendages are attached by separate panels with multiple square and “x” stitches for integrity.

Velcro pads are located on the strong nylon webbing suspender harness and the cuffs of the jacket and pants, to provide rapid versatile fitting. Corrosion resistant snap fittings on the jacket and pants make it easy to suit up. The large hood, with drawstring, fits over any standard helmet.

# Conductive Suit

Suit of trousers and jacket in sizes Medium, Large and Extra Large. See ordering information below.



Here is a view inside the jacket showing the grounding strap of the jacket and pants tied together. This prevents the electrical separation of the jacket from the pants.

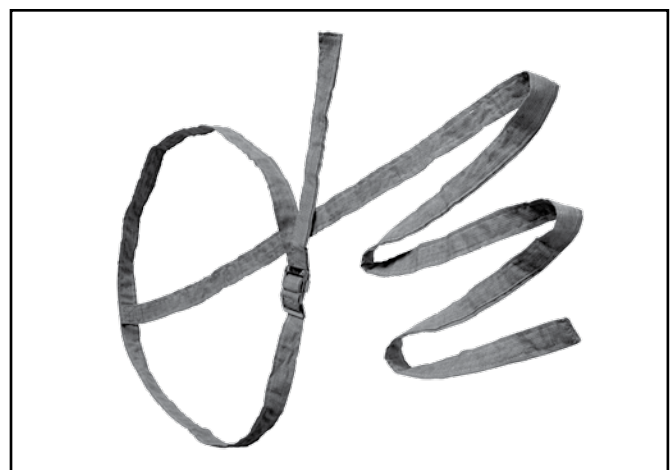
## ORDERING INFORMATION

| Catalog No. | Description                   | Weight          |
|-------------|-------------------------------|-----------------|
| C4020533    | Conductive Suit — medium      | 2 lb./ .9 kg.   |
| C4020534    | Conductive Suit — large       | 2 lb./ .9 kg.   |
| C4020535    | Conductive Suit — extra large | 2 lb./ .9 kg.   |
| C4020558    | Conductive Gloves (pair)      | 1/2 lb./ .2 kg. |
| C4020578    | Conductive Socks (pair)       | 1/3 lb./ .2 kg. |

## STATIC BELT

The belt when worn by the linemen working on EHV structure serves as a continuous ground to minimize static discomfort while working near energized lines. The belt, made of the same material as Chance Conductive Suits, should be buckled snugly around the waist, next to bare skin and has a six-foot lead, that can be attached to the steel structure.

| Cat. No. | Description | Weight |
|----------|-------------|--------|
| T4020694 | Static Belt | 2 oz.  |



T4020694

## Conductive Boots

The Chance 8-inch leather conductive boot offers the lineman both comfort and protection. The boot meets all ANSI Specifications for conductive footwear.

This boot has a leg harness with a black conductive sole that has a wire molded into the rubber and leading up the back with the conductive rubber strap covering to a conductive snap fitting at the top of the boot. There is an additional conductive boot strap to be secured through a snap fitting from the boot to a conductive suit or to the leg strap. This connection again, has a wire built into a nylon and conductive rubber strap.

**Weight per pair: 6½ lb./2.9 kg.**



**Mechanical features.** Boot upper is made of top quality, high oil content leather. Resists water. Flexes better. Lasts longer. Stitching and brown finish are finely crafted. It meets specifications for ANSI Class 75 steel toe footwear (75 lb. crush strength) and has a flexible full stainless steel inner sole, 400 pound test. The heel counter is molded into the sole to prevent its pulling away. The welt is neoprene, not rubber or leather, to resist cracking.

The sole is vulcanized under 20,000 pounds of pressure to the welt, not to upper. This makes the sole more flexible and helps prevent it from separating from upper. A tempered steel shank is built-in for proper arch support.

**Electrical features.** The Chance boot meets ANSI Specifications Z41 for safety-toe footwear. They are manufactured to a specification of less than 10,000 ohms from the top of the leg strap to the heel of the boot. 100% inspection and testing is conducted on each boot as part of the manufacturing process.

| Catalog No.* | Size (EEE widths) |
|--------------|-------------------|
| C4170623     | 6                 |
| C4170624     | 7                 |
| C4170122     | 8                 |
| C4170123     | 9                 |
| C4170124     | 10                |
| C4170125     | 11                |
| C4170126     | 12                |
| C4170625     | 13                |
| C4170626     | 14                |

\* Leg harness straps are included

## Linemen's Holsters



**PS111HLS**  
(Tools not included)



**PSC111HLDS**  
(Tools not included)

Bashlin manufactures only premium holsters for tool belts. They feature double backs which are reinforced for extra wear.

**Left handed holsters are available at no extra cost. (Add an "LH" to the part number when ordering.)**

No. PS111HLS For pliers, rule, screwdriver,  
\*Channellock<sup>®</sup>, knife  
or wrench Ship Wt: 1.25 lb (0.57 kg)

No. PSC111HLDS For pliers, rule, screwdriver,  
\*Channellock<sup>®</sup>, ratchet driver,  
knife or wrench  
Ship Wt: 1.50 lb (0.68 kg)

\*Registered trademark of Channellock, Inc.

**Do not use groundmen's or electrician's holsters on linemen's tool belts.**



# Ordering Bashlin Tool Belts

## Sizing

Proper sizing is one of the most important considerations in the purchase of a lineman's tool belt. An improperly sized belt is uncomfortable and may cause an accident or injury.

Bashlin tools belts are measured by the "D" size, which is the distance between the heels of the D-rings.

**All linemen's tool belts must be ordered according to the "D" size.**

### To Find Your "D" Size

1. Locate the point where the heel of the "D" ring should rest. As the photo illustrates, this is approximately 4" down from the top of the hip bone.
2. Begin to measure from this point. Measure around the buttocks to the same point on the opposite side.

When a properly sized tool belt is worn, the D-rings will point nearly straight ahead and the tongue adjustment will be in the center holes as shown in Photo 3.

To properly size the *Padded Rest-A-Back* tool belts, add 2" to your standard "D" measurement.



### BELT ADJUSTMENT IN INCHES - PER ASTM F887

| D Size, inches | Minimum, inches | Center Hole | Maximum, inches | Tool Loops |
|----------------|-----------------|-------------|-----------------|------------|
| D18            | 32              | 36          | 40              | 3          |
| D19            | 33              | 37          | 41              | 3          |
| D20            | 34              | 38          | 42              | 3          |
| D21            | 36              | 40          | 44              | 4          |
| D22            | 37              | 41          | 45              | 4          |
| D23            | 38              | 42          | 46              | 4          |
| D24            | 40              | 44          | 48              | 4          |
| D25            | 41              | 45          | 49              | 4          |
| D26            | 42              | 46          | 50              | 4          |
| D27            | 44              | 48          | 52              | 4          |
| D28            | 45              | 49          | 53              | 4          |

### ⚠ WARNING

Never carry wire, tools, or anything other than the "positioning" strap in the D-rings of a tool belt. Foreign objects carried in the D-rings may cause the snap to malfunction, and accidental disengagement to occur.

### ⚠ WARNING

Falls can cause serious injury or death.

## Linemen's Tool Belts (continued, next page)

All linemen's tool belts must be ordered according to "D" size.  
 Example: PSC60FHD21 See how and table above.

### The Bashlin Deluxe

The Bashlin Deluxe is a field-tested, proven design. It is one of the original semi-floating, shifting "D" belts. The shifting "D"s reduce chafing and bumps on the hips. The 5" cushion pad is soft and breaks in easily. The harness leather tool loops and tongue and buckle section are designed for rugged wear.

No. PSC60FHDXX

Ship Wt: 6.25 lb (2.83 kg)



# Linemen's Tool Belts (continued)

All linemen's tool belts must be ordered according to "D" size.

Example: PSC1511ND18 See how and table on Page 2555.



## The Floridian

Superior design and performance make this belt the industry standard. It combines a padded, contour cushion section with flares for the shifting D-rings and a 5½" back. This belt gives excellent support and climbing comfort. It is a practical belt with wearable quality which makes it economical.

No. PS88DXX

Ship Wt: 6.50 lb (2.95 kg)



## The Wrangler

A 5" cushion section, a nylon back, and a 6 ply tongue and buckle section are features of this practical favorite. It is lightweight, with standard comfort features, including Bashlin's S-shaped D-rings and an all leather cushion.

No. PSC1511NDXX

Ship Wt: 5.25 lb (2.38 kg)



## The Nylon Deluxe

A familiar design in a shifting "D" nylon belt. The neoprene impregnated nylon back is light, durable and flexible in extreme temperature ranges. The 5" leather cushion section is comfortable. The tongue and buckle is 6 ply nylon and the tool loops are leather.

No. PS160NDXX

Ship Wt: 6.00 lb (2.72 kg)



## Rest-A-Back

Bashlin's Back Support Tools Belts help relieve strain and fatigue. Use the chart to determine the proper size.

To properly size the **Padded Rest-A-Back** tool belts, add 2" to your standard "D" measurement. See Page 2555.

No. PS88BDXX

Ship Wt: 8.50 lb (3.83 kg)

| Belt Size | Upper Tongue Adjustment | Belt Size | Upper Tongue Adjustment |
|-----------|-------------------------|-----------|-------------------------|
| D18       | 29-36"                  | D24       | 35-42"                  |
| D19       | 30-37"                  | D25       | 36-43"                  |
| D20       | 31-38"                  | D26       | 37-44"                  |
| D21       | 32-39"                  | D27       | 38-45"                  |
| D22       | 33-40"                  | D28       | 39-46"                  |
| D23       | 34-41"                  | D29       | 40-47"                  |
|           |                         | D30       | 41-48"                  |

# Pole Straps

Bashlin's 50 Series and 78 Series pole straps are offered here with the "L" style snaphook which has lengthy field experience. It has a lock on the back to be released prior to opening the gate.

**⚠ WARNING**

Always visually confirm the strap is on the D-ring with the gate closed and locked before allowing the strap to support your body weight. Do not just listen for the "click".

## 50 Series

The 6 ply 1<sup>3</sup>/<sub>4</sub>" neoprene coated nylon material uses a tongue buckle adjustment.

| Length | Catalog No. | Ship Wt          |
|--------|-------------|------------------|
| 5' 6"  | PS51N2HL    | 3.75 lb (1.7 kg) |
| 6'     | PS52N2HL    | 3.75 lb (1.7 kg) |
| 6' 6"  | PS53N2HL    | 4.00 lb (1.8 kg) |
| 7'     | PS54N2HL    | 4.00 lb (1.8 kg) |



**⚠ WARNING**

The 50 series straps have red wear indicators in the center to help determine when it is time to replace them. When you see red it is time to remove the strap from service.

## 78 Series

Bashlin's pliable latigo leather straps feature a nylon insert. The stitching is deeply imbedded in the leather for longer wear.

| Length | Catalog No. | Ship Wt          |
|--------|-------------|------------------|
| 5' 6"  | PSC78X2HL   | 4.25 lb (1.9 kg) |
| 6'     | PSC78A2HL   | 4.25 lb (1.9 kg) |
| 6' 6"  | PSC78B2HL   | 4.50 lb (2.0 kg) |
| 7'     | PSC78C2HL   | 5.00 lb (2.3 kg) |



**⚠ WARNING**

Double action locking snaphooks reduce, but do not eliminate, the possibility of accidental disengagement. Caution and proper work methods including keeping the Snap/D ring area free from foreign objects must be practiced at all times. Disabling the gate locks may cause accidents, injury or death.



# Full Body Harnesses

## ⚠ WARNING

1. The user must be properly trained prior to using Bashlin products.
2. Use the proper product for the job.
3. Inspect the harness before each use.
4. Wear the harness tight. It must be tight enough that the buckles hold the material properly and will not disengage accidentally. If the harness is loose, the material can hook on items in the work area, or in the worst case will not perform properly in the event of an arrested fall.
5. Check the buckles, and tighten the straps each time before going aloft.
6. Store the harness properly in a storage bag for longer wear.



Bashlin harnesses are normally made from 10,000 lb. test woven nylon web. The webbing is in contrasting colors (usually orange on the torso and black on the legs) for easier donning. They meet or exceed all appropriate ANSI, ASTM, and OSHA requirements. The hardware features a corrosion resistant coating. The splices are lock stitched with nylon thread of a contrasting color for easy inspection. Each standard harness is tagged per ANSI/ASTM requirements with the labels shown.

## ⚠ CAUTION

**Bashlin harnesses must be sized and adjusted properly to function properly.**

### Sizing

The Bashlin harness is sized according to the torso of the individual. This involves measuring the height and the chest, then finding the correct size on the chart, according to the style of the harness. Height is the first consideration. However, if the chest measurement is too large for the corresponding height, move to the larger size. If the chest measurement is too small for the corresponding height, choose the size dictated by the height.

## PS647TDS Tower Harness

Bashlin's newest tower, climbing and suspension harness has leather lining on the waist and seat strap. The back pad is 6" wide. The waist belt uses a grommet style closure. Please state size: S, M, L, XL.

No. PS647TDS\_ \_ Tower Harness  
with back and shoulders D rings Ship Wt: 8 lb (3.63 kg)

| Size             | Height       | Chest     |
|------------------|--------------|-----------|
| "S" Small        | 5'4" - 5'7"  | 28" - 38" |
| "M" Medium       | 5'8" - 5'11" | 38" - 48" |
| "L" Large        | 6' - 6'3"    | 48" - 58" |
| "XL" Extra Large | 6'3"+        | 58"+      |

**Example: PS647TDSXL (= Extra Large)**

## PS683XAP Climbing Harness

The "X" style harness is available with the 656CM tool belt. This belt can be easily removed from the harness when it is not needed. The harness features a front attachment point for work positioning on ladders or rescue. Please state size, and belt "D" size.

No. PS683XAP\_ \_ Climbing Harness with a 3" nylon loop for lanyard in back Ship Wt: 8 lb (3.65 kg)

| Size                    | Height       | Chest     |
|-------------------------|--------------|-----------|
| "S" Small               | 5'4" - 5'7"  | 34" - 36" |
| "M" Medium              | 5'8" - 5'11" | 36" - 40" |
| "L" Large               | 6' - 6'3"    | 42" - 44" |
| "XL" Extra Large        | 6'4" - 6'6"  | 46" - 48" |
| "2X" Double Extra Large | 6'6"+        | 48" - 52" |
| "3X" Triple Extra Large | 6'6"+        | 52"+      |

**Example: PS683XAPL (= Large)**

## ⚠ CAUTION

**Connection to the front loop of the PS683XAP harness can be made with carabiners or by looping web or rope through the eye. Snaphooks that may cut the material are not to be used.**



# Fall Arrest Lanyards

Bashlin shock absorbing 2000 Series lanyards are recommended for most fall arrest applications. They include an integral polyester core that absorbs forces as it expands.

## ⚠ WARNING

Limiting the lanyard length to 6' will not ensure a free fall of 6' or less. The lanyard length, anchor point and work location together will determine the free fall distance.

## ⚠ CAUTION

Lanyards may be connected to D-Rings on harnesses with web/rope loops, and properly dimensioned carabiners or snaphooks. 3" nylon loop back attachments require web/rope loops or properly dimensioned carabiners. Snaphooks are not to be used with such attachment points.



1" tubular nylon web with polyester shock absorbing core, 1-6650 snaphook and a loop end.

No. PS28056HL Shock absorbing lanyard  
Ship Wt: 1.5 lb (0.68 kg)

## ⚠ CAUTION

The maximum and standard length for Bashlin 2000 Series fall arrest lanyard is 6 feet. This is to aid the user in compliance with OSHA's maximum 6 feet free fall for personal fall arrest systems.

# Pole Climbers

Bashlin pole climbers meet ASTM - F887 requirements. Bashlin climbers include #2 gaff guard and #5 gaff gauge standard. Nylon straps are standard on Bashlin climbers.

## BD14 Series

The BD14 is Bashlin's aluminum alloy offset climber with a replaceable, forged steel gaff. This lightweight climber reduces fatigue and adds climbing comfort. Comparable steel climbers weigh 30% more. The aluminum alloy construction sacrifices some wearing qualities.

| Number   | Description  | Ship Wt:          |
|----------|--|-------------------|
| PSBD141N | Bottom straps attached                             | 4.25 lb (1.93 kg) |
| PSBD142N | Bottom straps attached, and top straps             | 4.75 lb (2.15 kg) |
| PSBD143N | Bottom straps attached, top straps and #110D pads  | 5.25 lb (2.38 kg) |
| PSBD144N | Bottom straps attached, top straps and #130D pads  | 5.50 lb (2.49 kg) |
| PSBD145N | Bottom straps attached, top straps and #140DS pads | 5.75 lb (2.61 kg) |

## BD16B Series

This rugged, steel alloy adjustable climber features a replaceable gaff, offset design, roomy ankle area, and a triangular strap ring.

|           |  |                   |
|-----------|--|-------------------|
| PSBD16B1N | Bottom straps attached                             | 5.50 lb (2.49 kg) |
| PSBD16B2N | Bottom straps attached, and top straps             | 6.00 lb (2.72 kg) |
| PSBD16B3N | Bottom straps attached, top straps and #110D pads  | 6.50 lb (2.95 kg) |
| PSBD16B4N | Bottom straps attached, top straps and #130D pads  | 6.75 lb (3.06 kg) |
| PSBD16B5N | Bottom straps attached, top straps and #140DS pads | 7.00 lb (3.18 kg) |

## ⚠ WARNING

Climbers are to be used by trained personnel only.

ALUMINUM  
PSBD14 SERIES



STEEL  
PSBD16B SERIES



# Climber Pads, Straps



PS105BC



PSC130D

## PS105 Series Pads

This is the original “spur-stay” climber pad. It is designed to reduce kick-back and twisting of the shank. The insert holds the climber for comfort and better gaff penetration. It is an excellent choice for the lineman who climbs occasionally. Available with a straight or angled metal section.

| Straight | Use on | Angled  | Use on | Ship Wt:         |
|----------|--------|---------|--------|------------------|
| PS105A   | PSBD16 | PS105AC | PSBD16 | 1.5 lb (0.68 kg) |
| PS105B   | PSBD14 | PS105BC | PSBD14 | 1.5 lb (0.68 kg) |

## PSC130D Pad

The PSC130D is an L-shaped design with light padding for added comfort.

No. PSC130D (padded) Ship Wt: 0.7 lb (0.32 kg)



PSC85N



PS86N



PS87N



PSC89N

## Climber Straps

Bashlin nylon climber straps are durable, pliable, and comfortable. They are double riveted and feature a protective buckle shield.

| Number | Description   | Ship Wt:         |
|--------|---|------------------|
| PSC85N | Top straps - 1 <sup>1</sup> / <sub>16</sub> " x 24"   | 0.6 lb (0.27 kg) |
| PS86N  | One piece lower straps - 1 <sup>1</sup> / <sub>16</sub> " x 28"   | 0.6 lb (0.27 kg) |
| PS87N  | Two piece lower straps - 1 <sup>1</sup> / <sub>16</sub> " x 28" (original style, to be used on the triangular ring of Bashlin climbers. Must be assembled.) | 0.7 lb (0.27 kg) |
| PSC89N | Two piece lower straps with split ring - 1 <sup>1</sup> / <sub>16</sub> " x 28"   | 0.7 lb (0.27 kg) |